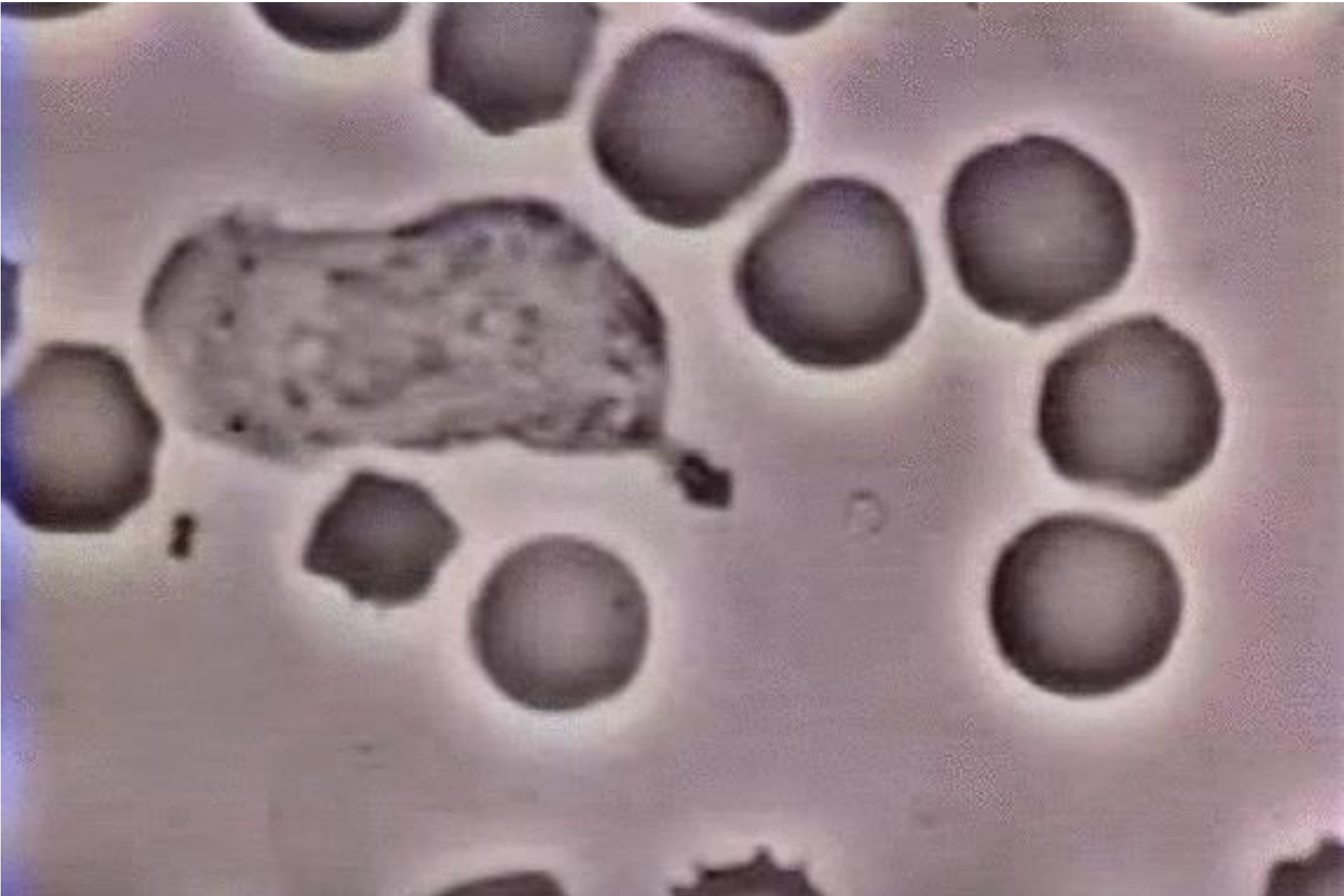


The image features a 10x10 grid of red dots on a black background. In the center, a network of green and yellow nodes is connected by thin green lines. A horizontal blue bar is positioned across the middle of this network. The text 'Lecture 5 Highlights' is overlaid in white, and '4/12/16' is overlaid in light gray below it.

Lecture 5 Highlights

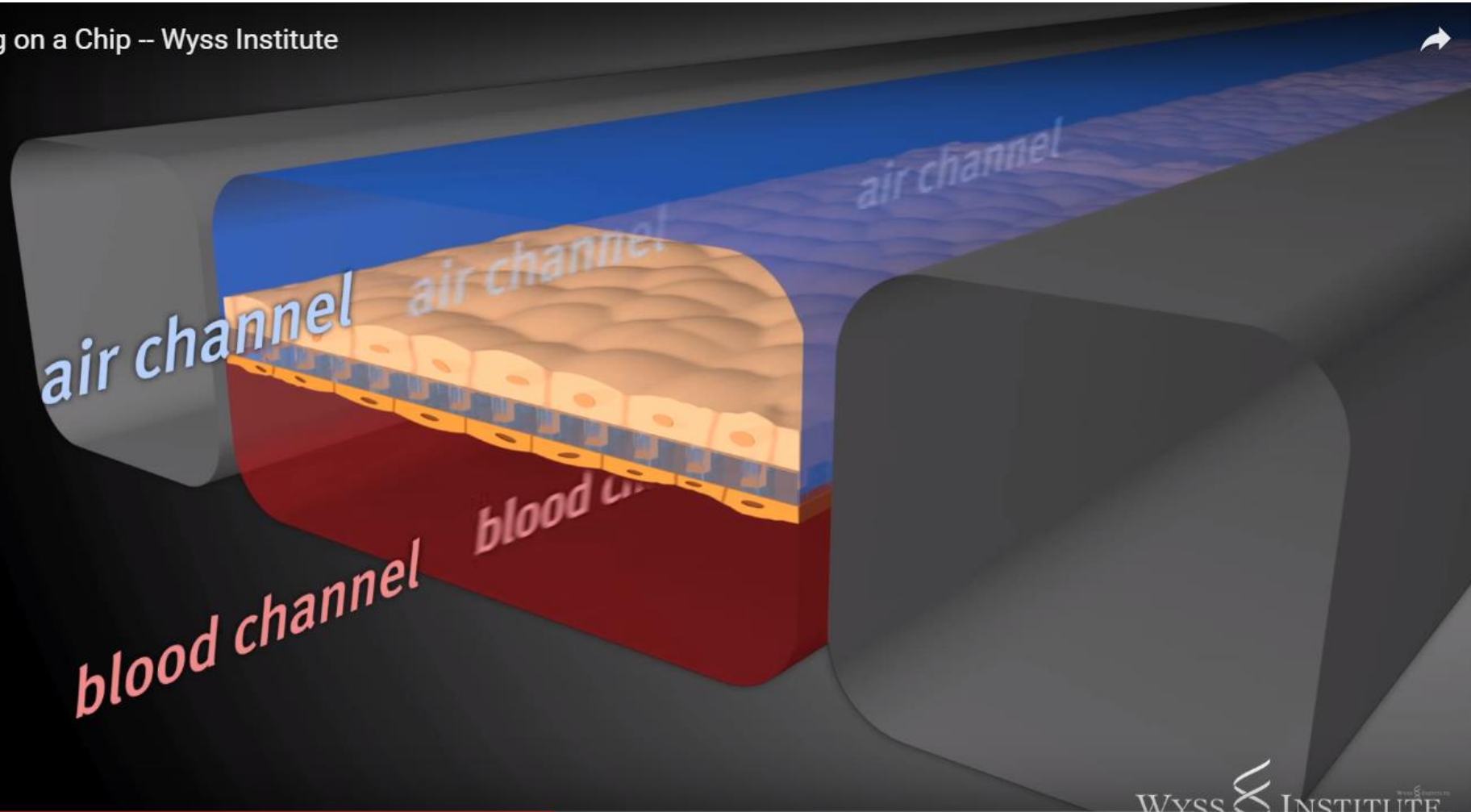
4/12/16

White Blood Cell



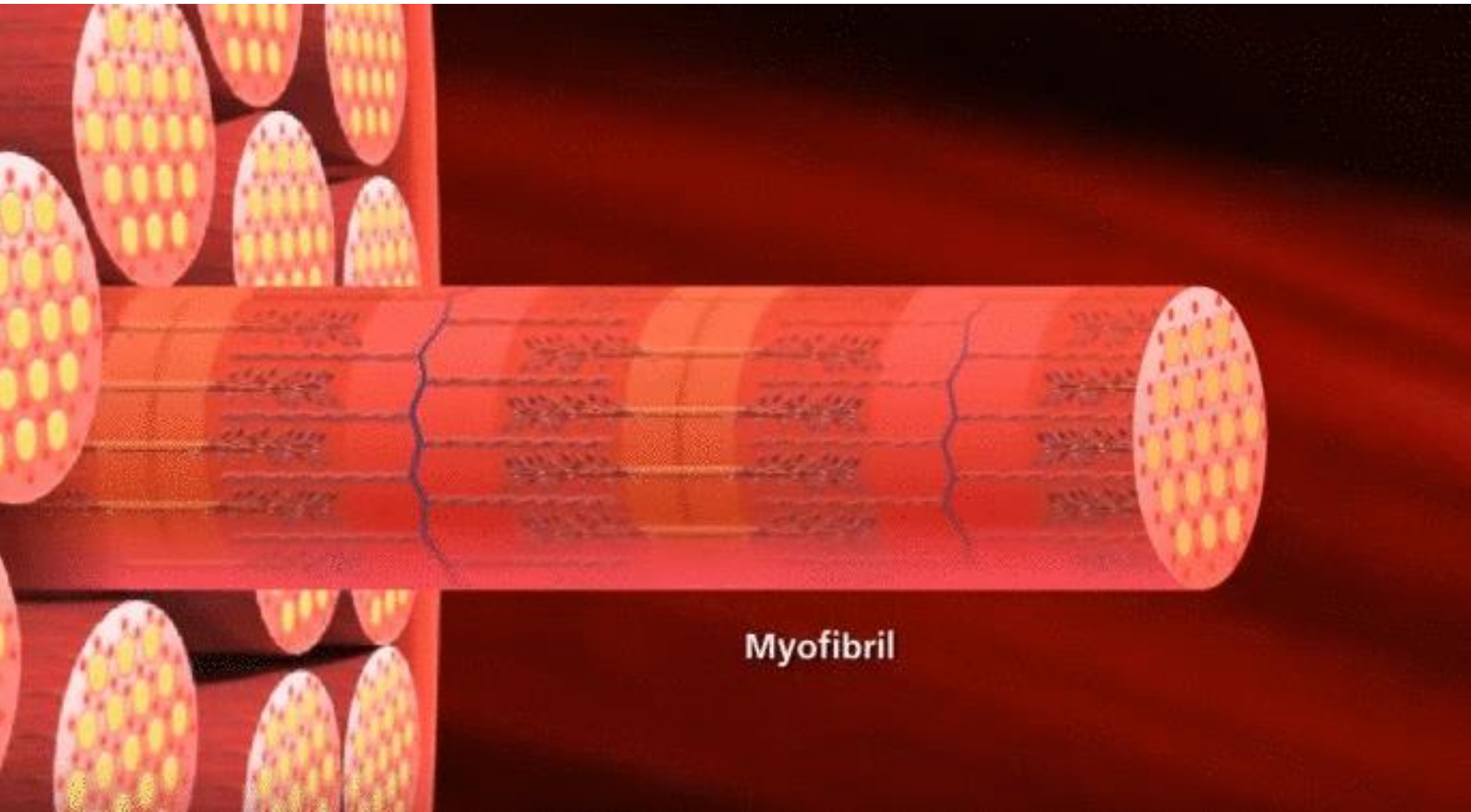
Lung on a Chip (Wyss Institute)

Lung on a Chip – Wyss Institute



▶ ⏪ 🔊 1:22 / 3:25

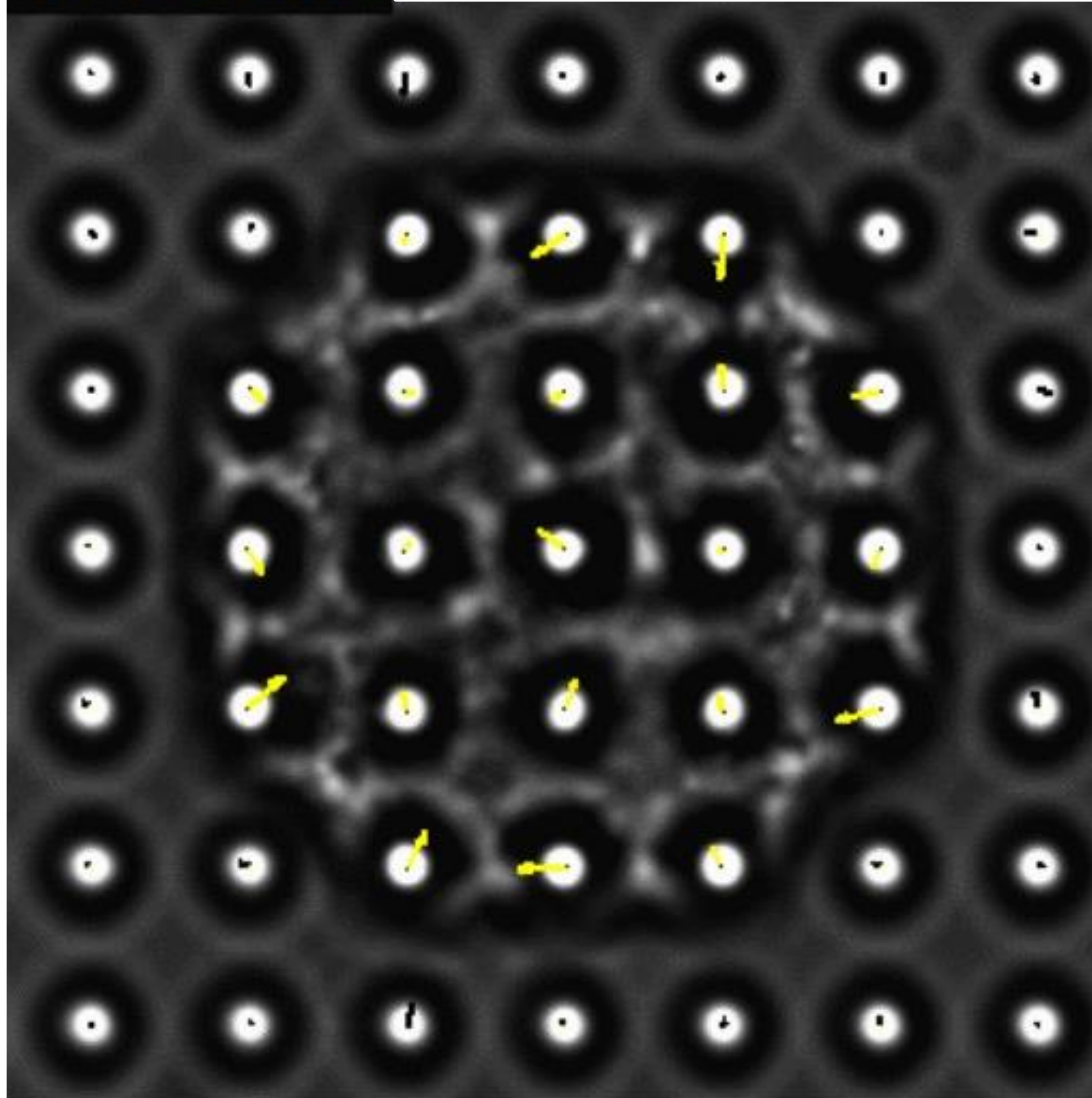
Muscle Contraction



Myofibril

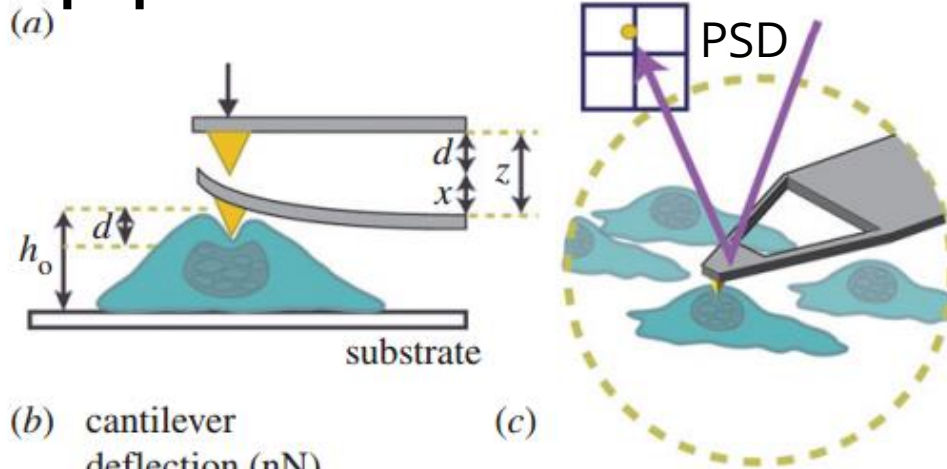
Micropost Technology (Sensing)

1.2518s

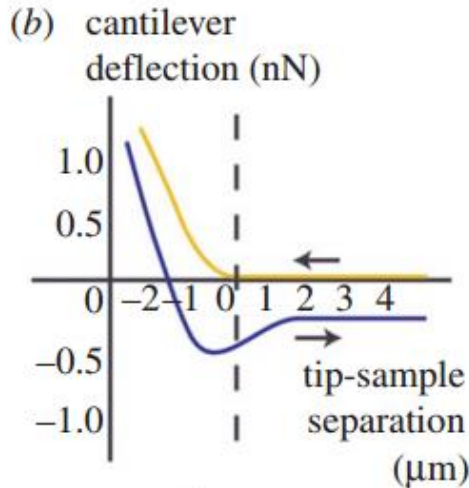


AFM (Application and Sensing)

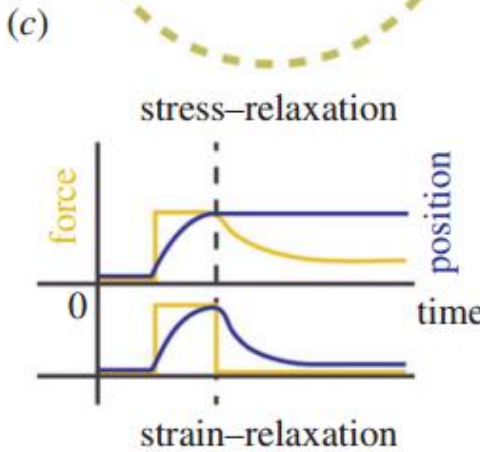
Apply compressive strains



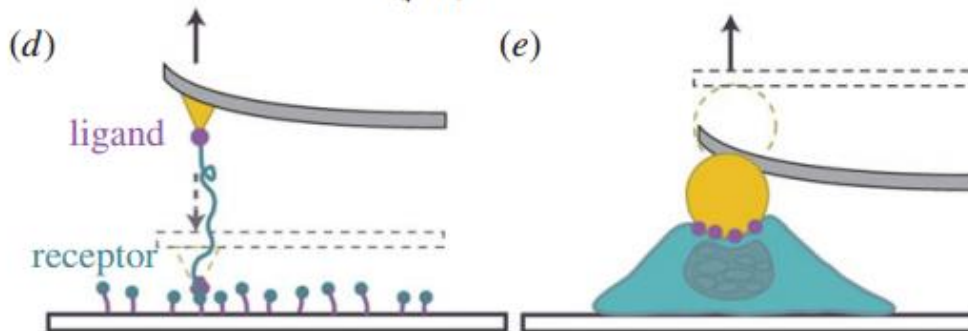
AFM force - indentation curve used to measure elasticity



Stress and strain relaxation curves to measure time dependent cellular behaviors



Single molecule interaction experiments



Spherical tip used to measure distributed forces